

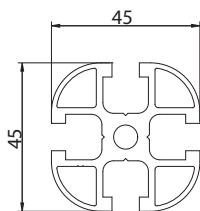
## PROFILI ARROTONDATI - ROUND PROFILES

### PROFILO 45X45 ARROTONDATO - ROUND 45X45 PROFILE

85  
45



MODELLO DEPOSITATO  
REGISTERED DESIGN



CODICE CODE	MOMENTO D'INERZIA MOMENT OF INERTIA		MODULO DI RESISTENZA SECTION MODULUS		SEZIONE SECTION	PESO WEIGHT
	lx cm <sup>4</sup>	ly cm <sup>4</sup>	wx cm <sup>3</sup>	wy cm <sup>3</sup>	mm <sup>2</sup>	kg/m
<b>800.029.001</b>	9,68	9,68	4,3	4,3	627	1,70

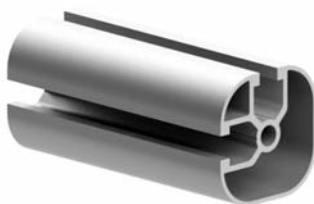
MATERIALE / MATERIAL: Alluminio anodizzato - Anodized aluminium

Colore naturale - Colour natural

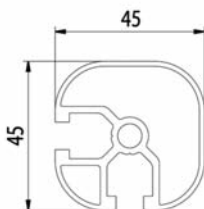
Lunghezza barra 6,040 m - Bar length 6,040 m

### PROFILO 45X45 ARROTONDATO SEMICHIUSO - HALF CLOSED ROUND 45X45 PROFILE

85  
45



NEW



CODICE CODE	MOMENTO D'INERZIA MOMENT OF INERTIA		MODULO DI RESISTENZA SECTION MODULUS		SEZIONE SECTION	PESO WEIGHT
	lx cm <sup>4</sup>	ly cm <sup>4</sup>	wx cm <sup>3</sup>	wy cm <sup>3</sup>	mm <sup>2</sup>	kg/m
<b>800.029.009</b>	7,52	7,52	3,43	3,43	434	1,17

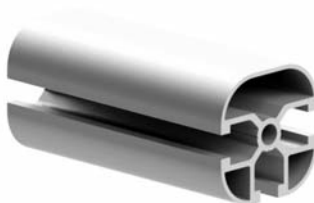
MATERIALE / MATERIAL: Alluminio anodizzato - Anodized aluminium

Colore naturale - Colour natural

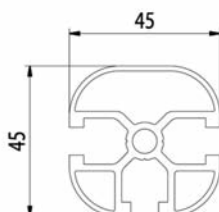
Lunghezza barra 6,040 m - Bar length 6,040 m

### PROFILO 30X30 ARROTONDATO 3 CAVE - 3 SLOTS ROUND 30X30 PROFILE

85  
45



NEW



CODICE CODE	MOMENTO D'INERZIA MOMENT OF INERTIA		MODULO DI RESISTENZA SECTION MODULUS		SEZIONE SECTION	PESO WEIGHT
	lx cm <sup>4</sup>	ly cm <sup>4</sup>	wx cm <sup>3</sup>	wy cm <sup>3</sup>	mm <sup>2</sup>	kg/m
<b>800.029.010</b>	9,14	8,22	4,06	3,65	502,04	0,74

MATERIALE / MATERIAL: Alluminio anodizzato - Anodized aluminium

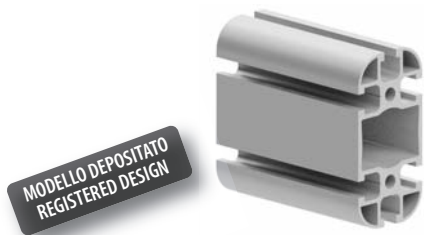
Colore naturale - Colour natural

Lunghezza barra 6,040 m - Bar length 6,040 m

## PROFILI ARROTONDATI - ROUND PROFILES

### PROFILO 45X90 ARROTONDATO - ROUND 45X90 PROFILE

85  
45

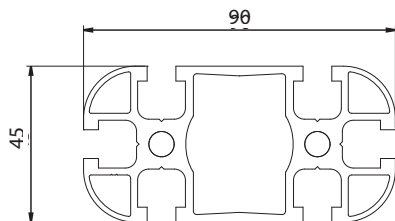


CODICE CODE	MOMENTO D'INERZIA MOMENT OF INERTIA		MODULO DI RESISTENZA SECTION MODULUS		SEZIONE SECTION	PESO WEIGHT
	$I_x \text{ cm}^4$	$I_y \text{ cm}^4$	$w_x \text{ cm}^3$	$w_y \text{ cm}^3$	$\text{mm}^2$	$\text{kg/m}$
<b>800.029.002</b>	21,42	82,51	9,52	18,33	1127	3,05

MATERIALE / MATERIAL: Alluminio anodizzato - Anodized aluminium

Colore naturale - Colour natural

Lunghezza barra 6,040 m - Bar length 6,040 m



### PROFILO 45X90 ARROTONDATO SEMICHIUSO - HALF CLOSED ROUND 45X90 PROFILE

85  
45

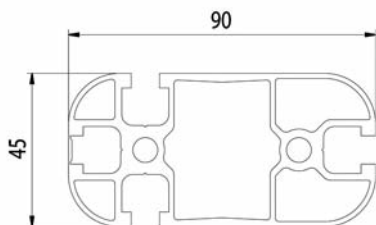


CODICE CODE	MOMENTO D'INERZIA MOMENT OF INERTIA		MODULO DI RESISTENZA SECTION MODULUS		SEZIONE SECTION	PESO WEIGHT
	$I_x \text{ cm}^4$	$I_y \text{ cm}^4$	$w_x \text{ cm}^3$	$w_y \text{ cm}^3$	$\text{mm}^2$	$\text{kg/m}$
<b>800.029.011</b>	74,41	18,82	16,53	8,36	956,98	2,58

MATERIALE / MATERIAL: Alluminio anodizzato - Anodized aluminium

Colore naturale - Colour natural

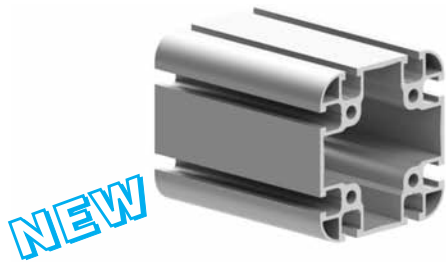
Lunghezza barra 6,040 m - Bar length 6,040 m



**PROFILI ARROTONDATI - ROUND PROFILES**

**PROFILO 90X90 ARROTONDATO - ROUND 90X90 PROFILE**

85  
45

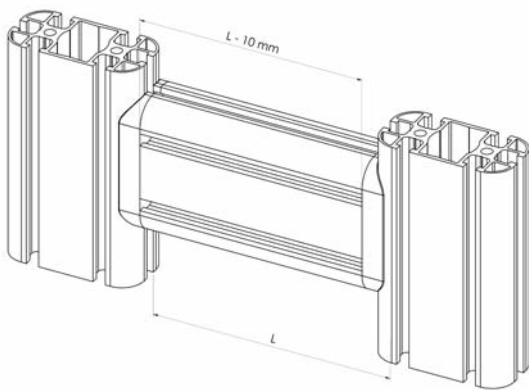
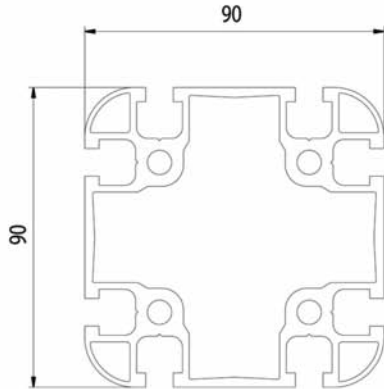


CODICE CODE	MOMENTO D'INERZIA MOMENT OF INERTIA		MODULO DI RESISTENZA SECTION MODULUS		SEZIONE SECTION	PESO WEIGHT
	lx cm <sup>4</sup>	ly cm <sup>4</sup>	wx cm <sup>3</sup>	wy cm <sup>3</sup>	mm <sup>2</sup>	kg/m
<b>800.029.012</b>	155,02	155,02	34,44	34,44	1766,58	4,77

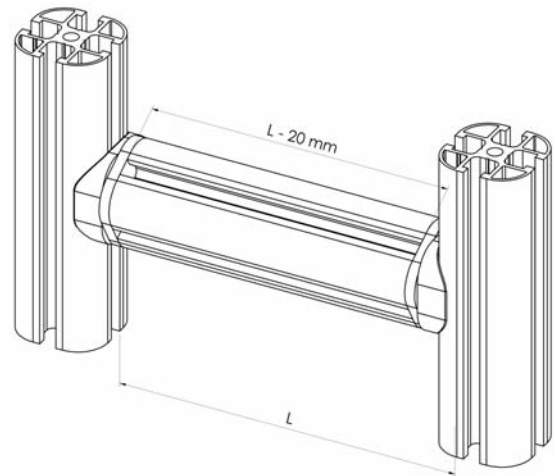
MATERIALE / MATERIAL: Alluminio anodizzato - Anodized aluminium

Colore naturale - Colour natural

Lunghezza barra 6,040 m - Bar length 6,040 m



**800.029.101 - 102 - 106 - 107 - 108**

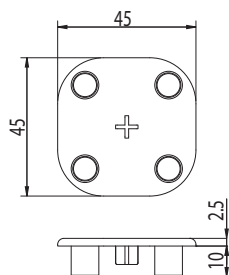
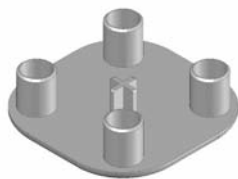


**800.029.103 - 104**

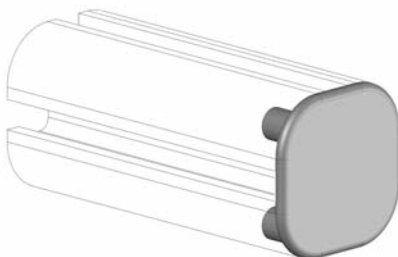
## PROFILI ARROTONDATI - ROUND PROFILES

### TAPPO PER PROFILO 45X45 ARROTONDATO - CAP FOR ROUND 45X45 PROFILE

85  
45

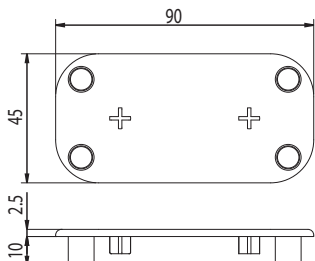
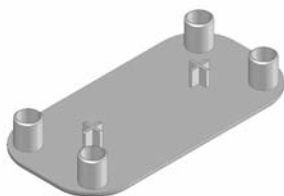


CODICE CODE	DESCRIZIONE DESCRIPTION	PESO g WEIGHT g
<b>800.029.109</b>	Tappo in poliammide nero 45 x 45 arrotondato <i>Black polyamide cap 45 x 45 round</i>	7
<b>800.029.109G</b>	Tappo in poliammide grigio 45 x 45 arrotondato <i>Grey polyamide cap 45 x 45 round</i>	7

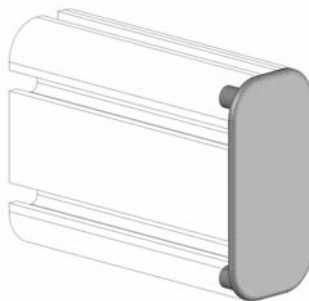


### TAPPO PER PROFILO 45X90 ARROTONDATO - CAP FOR ROUND 45X90 PROFILE

85  
45

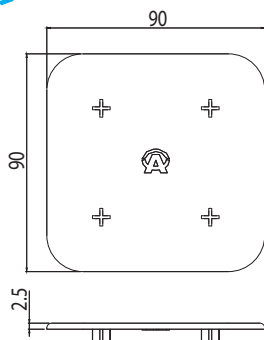


CODICE CODE	DESCRIZIONE DESCRIPTION	PESO g WEIGHT g
<b>800.029.110</b>	Tappo in poliammide nero 45 x 90 arrotondato <i>Black polyamide cap 45 x 90 round</i>	12
<b>800.029.110G</b>	Tappo in poliammide grigio 45 x 90 arrotondato <i>Grey polyamide cap 45 x 90 round</i>	12

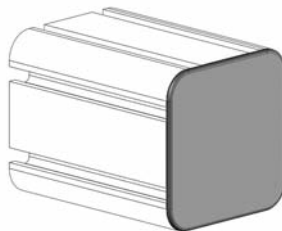


### TAPPO PER PROFILO 90X90 ARROTONDATO - CAP FOR ROUND 90X90 PROFILE

85  
45



CODICE CODE	DESCRIZIONE DESCRIPTION	PESO g WEIGHT g
<b>800.029.138</b>	Tappo in poliammide nero 90 x 90 arrotondato <i>Black polyamide cap 90 x 90 round</i>	20
<b>800.029.138G</b>	Tappo in poliammide grigio 90 x 90 arrotondato <i>Grey polyamide cap 90 x 90 round</i>	20



**NEW**

## PROFILI ARROTONDATI - ROUND PROFILES

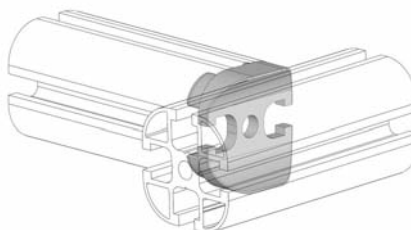
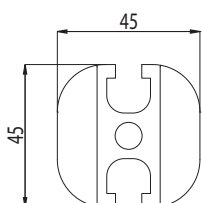
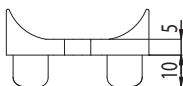
### GIUNTO ORTOGONALE 45X45 DOPPIO RIFERIMENTO - *ORTHOGONAL JOINT 45X45 DOUBLE*

85  
45



CODICE CODE	DESCRIZIONE DESCRIPTION	PESO g WEIGHT g
<b>800.029.101</b>	Giunto ortogonale 45 x 45 con doppio riferimento Ideale per giunzioni robuste e antirotazione <i>Orthogonal joint 45 x 45 with double reference</i> <i>Suitable for strong connection with antirotation needs</i>	45

MATERIALE / MATERIAL: Alluminio Sabbiato - *Sandblasted aluminium*



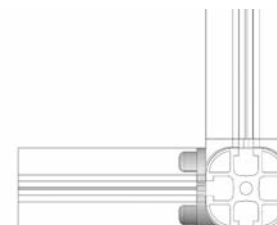
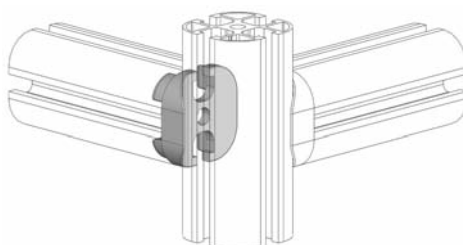
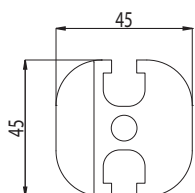
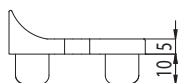
### GIUNTO ORTOGONALE 45X45 SINGOLO RIFERIMENTO - *ORTHOGONAL JOINT 45X45 SINGLE*

85  
45



CODICE CODE	DESCRIZIONE DESCRIPTION	PESO g WEIGHT g
<b>800.029.102</b>	Giunto ortogonale 45 x 45 con singolo riferimento Ideale per giunzioni a croce o angolo <i>Orthogonal joint 45 x 45 with single reference</i> <i>Suitable for cross or corner connection</i>	40

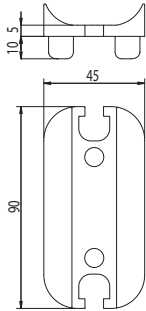
MATERIALE / MATERIAL: Alluminio Sabbiato - *Sandblasted aluminium*



**PROFILI ARROTONDATI - ROUND PROFILES**

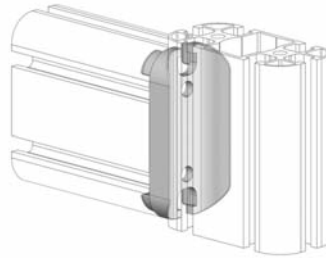
**GIUNTO ORTOGONALE 45X90 DOPPIO RIFERIMENTO - ORTHOGONAL JOINT 45X90 DOUBLE**

85  
45



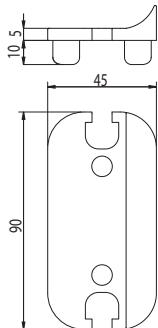
CODICE CODE	DESCRIZIONE DESCRIPTION	PESO g WEIGHT g
<b>800.029.106</b>	Giunto ortogonale 45 x 90 con doppio riferimento verticale Ideale per giunzioni robuste e antirotazione <i>Orthogonal joint 45 x 90 with double vertical reference Suitable for strong connection with antirotation needs</i>	80

MATERIALE / MATERIAL: Alluminio Sabbiato - Sandblasted aluminium



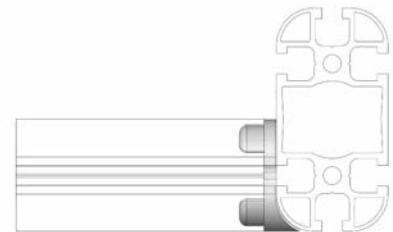
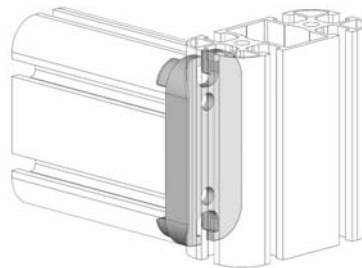
**GIUNTO ORTOGONALE 45X90 SINGOLO RIFERIMENTO - ORTHOGONAL JOINT 45X90 SINGLE**

85  
45



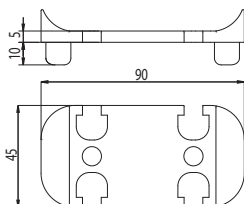
CODICE CODE	DESCRIZIONE DESCRIPTION	PESO g WEIGHT g
<b>800.029.107</b>	Giunto ortogonale 45 x 90 con singolo riferimento Ideale per giunzioni a croce o angolo <i>Orthogonal joint 45 x 90 with single reference Suitable for cross or corner connection</i>	72

MATERIALE / MATERIAL: Alluminio Sabbiato - Sandblasted aluminium



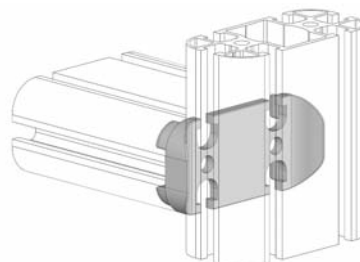
**GIUNTO ORTOGONALE 45X90 DOPPIO RIFERIMENTO - ORTHOGONAL JOINT 45X90 DOUBLE**

85  
45



CODICE CODE	DESCRIZIONE DESCRIPTION	PESO g WEIGHT g
<b>800.029.108</b>	Giunto ortogonale 45 x 90 con doppio riferimento orizzontale Ideale per giunzioni robuste e antirotazione con profili verticali <i>Orthogonal joint 45 x 90 with double horizontal reference Suitable for strong connection with vertical profiles</i>	68

MATERIALE / MATERIAL: Alluminio Sabbiato - Sandblasted aluminium



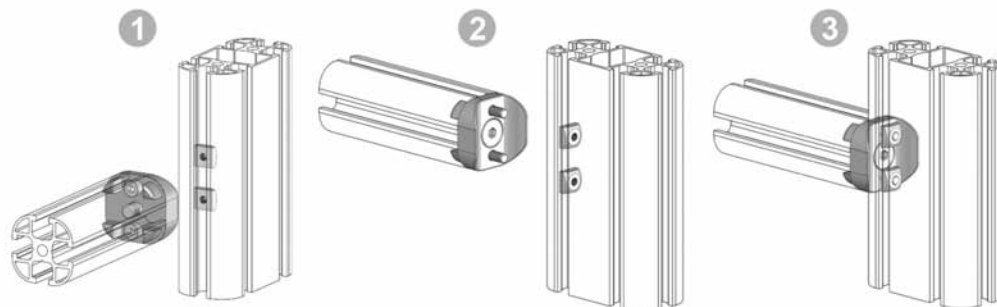
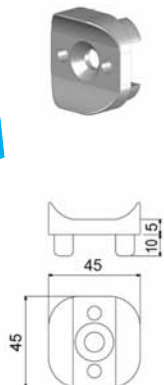
## PROFILI ARROTONDATI - ROUND PROFILES

### GIUNTO ORTOGONALE 45X45 RAPIDO DOPPIO RIFERIMENTO - *ORTHOGONAL QUICK JOINT 45X45 DOUBLE* 85 45

CODICE CODE	DESCRIZIONE DESCRIPTION	PESO g WEIGHT g
<b>800.029.141</b>	Giunto ortogonalee 45 x 45 rapido con doppio riferimento. Ideale per realizzare giunzioni su strutture esistenti o realizzare fissaggi regolabili <i>Orthogonal quick joint 45 x 45 with double reference. Ideal to make junctions on existing structures or to build adjustable mounts</i>	50

MATERIALE / MATERIAL: Alluminio Sabbiato - Sandblasted aluminium

**NEW**

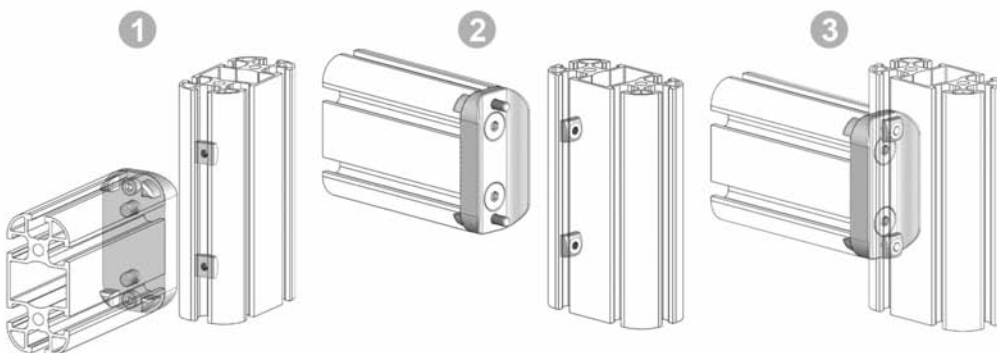
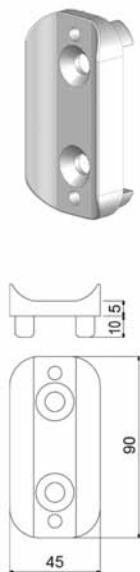


### GIUNTO ORTOGONALE 45X90 RAPIDO DOPPIO RIFERIMENTO - *ORTHOGONAL QUICK JOINT 45X90 DOUBLE* 85 45

CODICE CODE	DESCRIZIONE DESCRIPTION	PESO g WEIGHT g
<b>800.029.146</b>	Giunto ortogonalee 45 x 90 rapido con doppio riferimento. Ideale per realizzare giunzioni su strutture esistenti o realizzare fissaggi regolabili <i>Orthogonal quick joint 45 x 95 with double reference. Ideal to make junctions on existing structures or to build adjustable mounts</i>	85

MATERIALE / MATERIAL: Alluminio Sabbiato - Sandblasted aluminium

**NEW**



## PROFILI ARROTONDATI - ROUND PROFILES

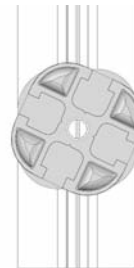
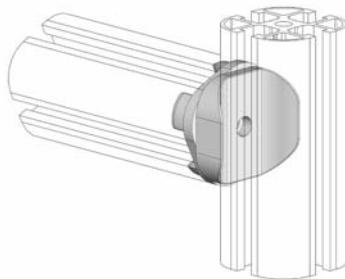
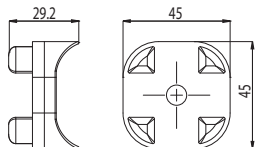
### GIUNTO REGOLABILE 45X45 DOPPIO RIFERIMENTO - ADJUSTABLE JOINT 45X45 DOUBLE

85  
45



CODICE CODE	DESCRIZIONE DESCRIPTION	PESO g WEIGHT g
<b>800.029.103</b>	Giunto regolabile 45 x 45 con doppio riferimento Ideale per la realizzazione di piani di appoggio inclinati <i>Adjustable joint 45 x 45 with double reference</i> <i>Suitable for making inclined support surfaces</i>	71

MATERIALE / MATERIAL: Alluminio Sabbiato - Sandblasted aluminium



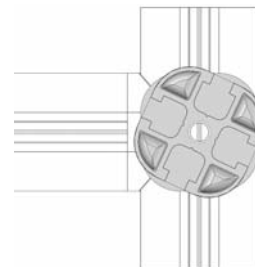
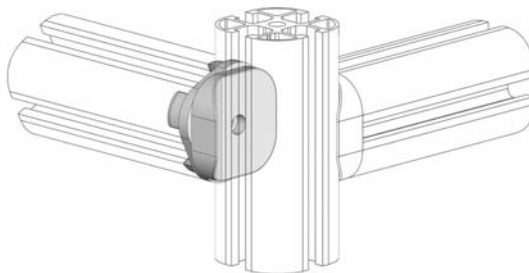
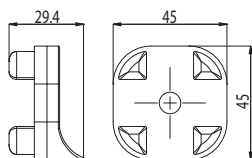
### GIUNTO REGOLABILE 45X45 SINGOLO RIFERIMENTO - ADJUSTABLE JOINT 45X5 SINGLE

85  
45



CODICE CODE	DESCRIZIONE DESCRIPTION	PESO g WEIGHT g
<b>800.029.104</b>	Giunto regolabile 45 x 45 con singolo riferimento Ideale per la realizzazione di piani di appoggio inclinati <i>Adjustable joint 45 x 45 with single reference</i> <i>Suitable for making inclined support surfaces</i>	68

MATERIALE / MATERIAL: Alluminio Sabbiato - Sandblasted aluminium



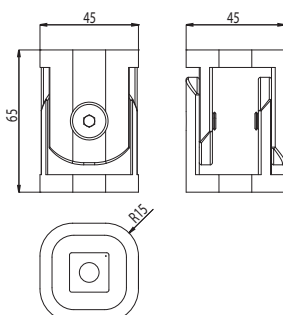
### GIUNTO SNODATO - ARTICULATED JOINT

85  
45



CODICE CODE	DESCRIZIONE DESCRIPTION	PESO g WEIGHT g
<b>084.311.013</b>	Giunto snodato profilo 45 x 45 arrotondato <i>Articulated joint for profile 45 x 45 round</i>	170

MATERIALE / MATERIAL: Alluminio Sabbiato - Sandblasted aluminium





## PROFILI ARROTONDATI - ROUND PROFILES

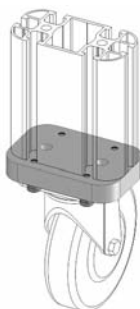
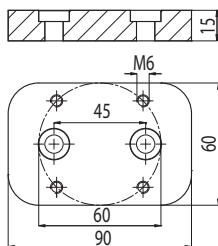
### FLANGIA PER RUOTA - WHEEL FLANGE

85  
45



CODICE CODE	DESCRIZIONE DESCRIPTION	PESO g WEIGHT g
<b>800.029.121</b>	Flangia per profilo 45 x 90 per fissaggio ruote con piastra Fornita senza viti <i>Flange 45 x 90 for wheels with plate Supplied without screws</i>	190

MATERIALE / MATERIAL: Alluminio anodizzato - Anodized aluminium



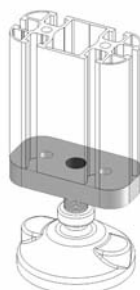
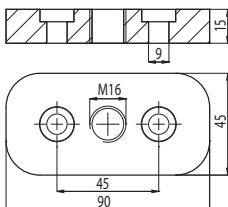
### FLANGIA PER PIEDINI - FEET FLANGE

85  
45



CODICE CODE	DESCRIZIONE DESCRIPTION	PESO g WEIGHT g
<b>800.029.122</b>	Flangia per profilo 45 x 90 per fissaggio piedini M16 Fornita senza viti <i>Flange 45 x 90 for M16 feet Supplied without screws</i>	150

MATERIALE / MATERIAL: Alluminio anodizzato - Anodized aluminium



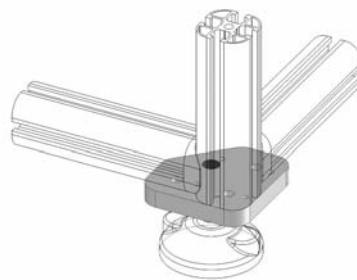
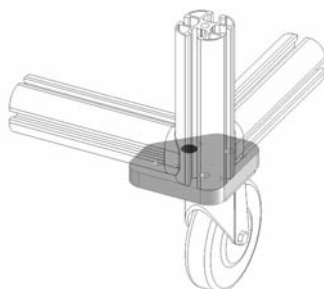
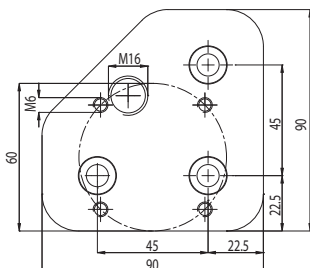
### FLANGIA D'ANGOLO - CORNER FLANGE

85  
45



CODICE CODE	DESCRIZIONE DESCRIPTION	PESO g WEIGHT g
<b>800.029.123</b>	Flangia per supporti d'angolo con ruota o con piedino M16 Fornita senza viti <i>Corner flange for support with wheels or M16 feet Supplied without screws</i>	240

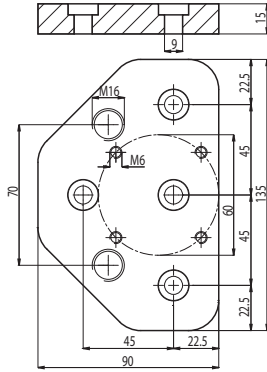
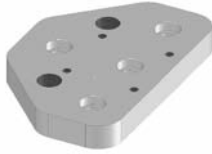
MATERIALE / MATERIAL: Alluminio anodizzato - Anodized aluminium



**PROFILI ARROTONDATI - ROUND PROFILES**

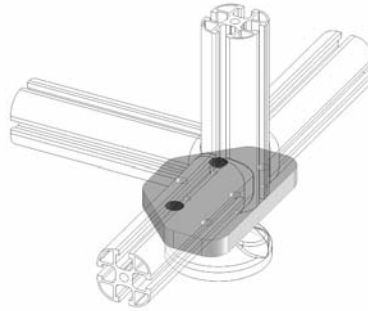
**FLANGIA GIUNZIONI A CROCE - CROSS FLANGE**

85  
45



CODICE CODE	DESCRIZIONE DESCRIPTION	PESO g WEIGHT g
<b>800.029.124</b>	Flangia per supporti intermedi con ruota o con piedini M16 Fornita senza viti <i>Flange for intermediate support with wheel or M16 feet Supplied without screws</i>	440

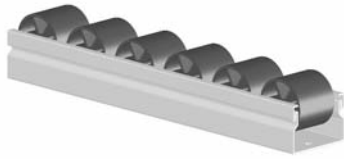
MATERIALE / MATERIAL: Alluminio anodizzato - Anodized aluminium



## PROFILI ARROTONDATI - ROUND PROFILES

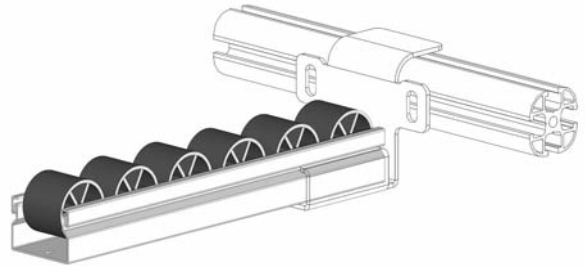
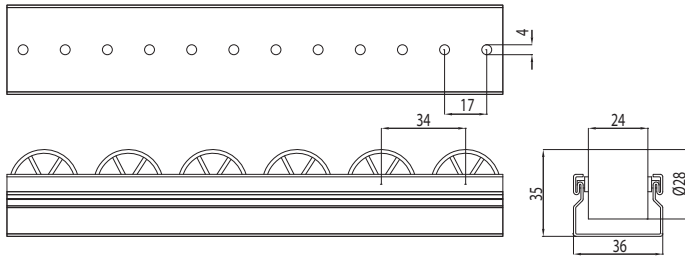
### RULLIERA - ROLLS

65 85  
30 45



CODICE CODE	DESCRIZIONE DESCRIPTION	PESO Kg/m WEIGHT kg/m
<b>800.029.005</b>	Canalina in acciaio zincato con rulli in poliammide <i>Galvanized steel channel with polyamide rolls</i>	0,83

Lunghezza standard 3 m - Standard length 3 m



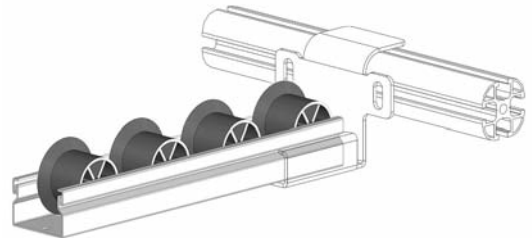
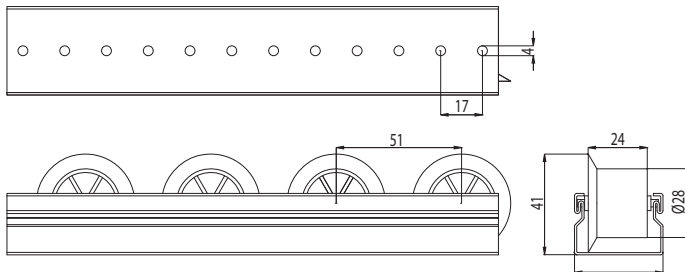
### RULLIERA - ROLLS

65 85  
30 45



CODICE CODE	DESCRIZIONE DESCRIPTION	PESO Kg/m WEIGHT kg/m
<b>800.029.006</b>	Canalina in acciaio zincato con rulli in poliammide con riscontro per cassetta <i>Galvanized steel channel with polyamide rolls with stop for boxes</i>	0,76

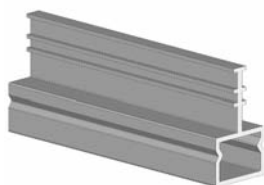
Lunghezza standard 3 m - Standard length 3 m



## PROFILI ARROTONDATI - ROUND PROFILES

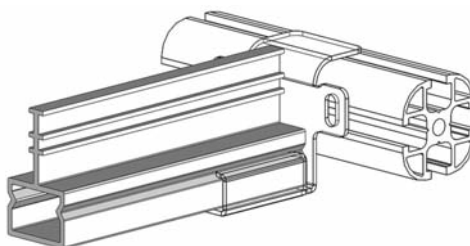
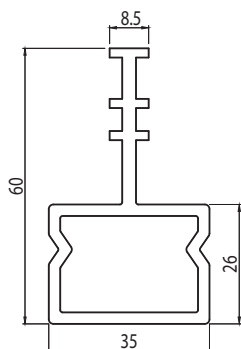
### SPONDA CENTRALE - CENTRAL GUIDE

65 85  
30 45



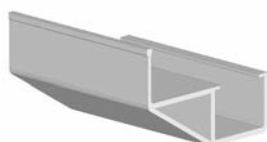
CODICE CODE	DESCRIZIONE DESCRIPTION	PESO Kg/m WEIGHT kg/m
<b>800.029.007</b>	Sponda di contenimento centrale <i>Central containment guide</i>	0,51

MATERIALE / MATERIAL: PVC rigido - *Rigid PVC*



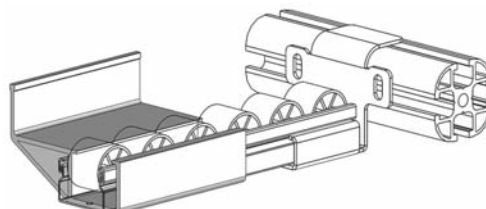
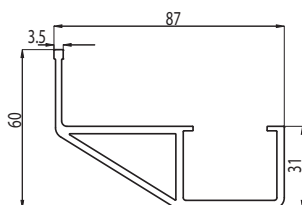
### SPONDA LATERALE - LATERAL GUIDE

65 85  
30 45



CODICE CODE	DESCRIZIONE DESCRIPTION	PESO Kg/m WEIGHT kg/m
<b>800.029.008</b>	Sponda di contenimento laterale <i>Lateral containment guide</i>	0,89

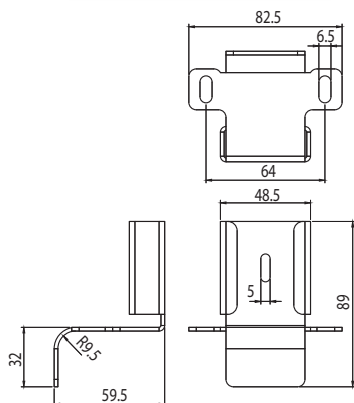
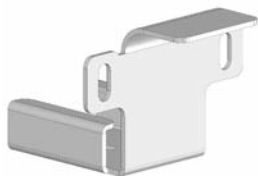
MATERIALE / MATERIAL: PVC rigido - *Rigid PVC*



## PROFILI ARROTONDATI - ROUND PROFILES

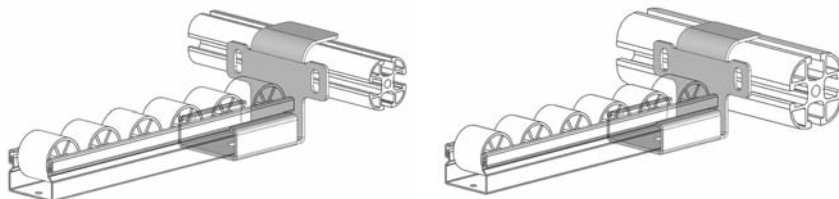
### STAFFA CON FERMO INTEGRATO - CLAMP WITH END STOP

65 85  
30 45



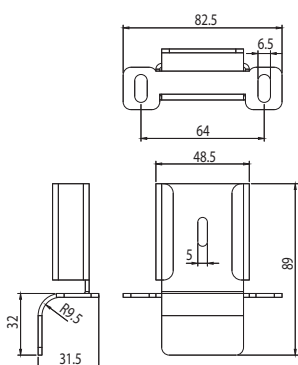
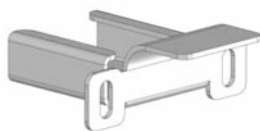
CODICE CODE	DESCRIZIONE DESCRIPTION	PESO g WEIGHT g
<b>800.029.125</b>	Staffa con fermo integrato per fissaggio rulliere Fissabile al profilo 45 x 45 <i>Clamp with end stop suitable to for rolls Fixable to 45 x 45 profile</i>	163

MATERIALE / MATERIAL: Acciaio zincato - Galvanized steel



### STAFFA STANDARD - STANDARD CLAMP

65 85  
30 45



CODICE CODE	DESCRIZIONE DESCRIPTION	PESO g WEIGHT g
<b>800.029.126</b>	Staffa standard per rulliere Fissabile al profilo 45 x 45 <i>Standard clamp for rolls Fixable to 45 x 45 profile</i>	156

MATERIALE / MATERIAL: Acciaio zincato - Galvanized steel

